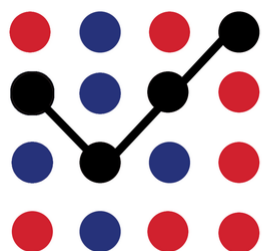


Talkin' Testing

Division of Teaching and Learning | December 2021



WINTER WINDOW

JANUARY 3-31, 2022

CIVICS EXAM - STUDENTS IN GRADE 07 AND HIGHER
ILLUMINATE FASTBRIDGE - SECONDARY READING AND MATH
I-READY MATH DIAGNOSTIC - GRADES KG-05
ISTATION GROWTH MONITORING - GRADE KG-05 READING



Winter (assessment window) Is Coming!

It's amazing to think that you are almost halfway complete with this school year! We appreciate your dedication to your craft and students, building strong relationships to guide their best learning.

As a reminder, the **second diagnostic window will open when you and your students return after winter break** for the assessments listed on the banner above. Although these diagnostics provide a snapshot of students' current abilities, it provides us the first look at the rate of growth over the last three months.

Assignments will be automatic and the assessments will be delivered upon student login. The testing window will remain open through the end of the first semester.

You Snow the Drill: Take Your TA Certification Test

In order to access powerful [Tools for Teachers](#), interim assessments, and test administration features, you will need to be "test administrator certified." Now is the time to consider taking the [TA Certification Course](#) - estimated at 30 minutes.



Please note that if this is the first time you've logged in this academic year, your password was reset. Please follow the "first time this year" link on the login page. For assistance and support, please reach out to your school test manager/library manager or use their interactive [Help Center](#).



Winter-full News: Teachers Can Proctor their Own Students on Spring ISAT

Teachers Allowed to Proctor Own Students on ISAT Summative

As you begin preparing your summative assessment schedule in March-May, the State Department has decided that they [will allow teachers to proctor the ELA/math/science summative tests](#) (page 3) to their own students. All trainings, signing of non-disclosure form, and the TA Certification Course are required.

State Decides to Use Adapted Form Again This Spring

The State Department will also be using the adapted form of the ISAT summative assessments. That means that the testing time experienced last year should be about the same for this spring. The only downside - we have fewer results to share with students, parents, and instructional staff. They will not receive specific scores by domain in any of their assessments and we will not be able to look at student performance by standard or target.



Yule Want to Use SmART Annotation for Better ISAT Writing Scores

Did you know that 725 district students on the 20 21 ISAT [were not able to have their writing scored because](#) they supplied insufficient evidence, were off-topic or were off-purpose?

Smarter Balanced worked with educators across the country to create the Smarter Annotated Response Tool (SmART), a new dynamic tool that supports educators in understanding how student writing is scored. [Educators can use SmART](#) to explore how different student responses are scored across the grade levels and writing. browse a range of response types, explore interactive

scoring rationales and rubrics, and practice scoring on your own or with colleagues.

Sleigh the New Science ISAT

The first official ISAT Science assessment will be given to students in grades 05, 08, and 11 this Spring. [MyCDASchools has a link](#) to all of the test blueprints and supporting documentation.

One of the best ways for teachers to learn about the assessment and prepare students is to provide interim assessments, which are available to be administered via the ISAT Test Administration (TA) app, the Assessment Viewing Application (AVA), or remote administration.

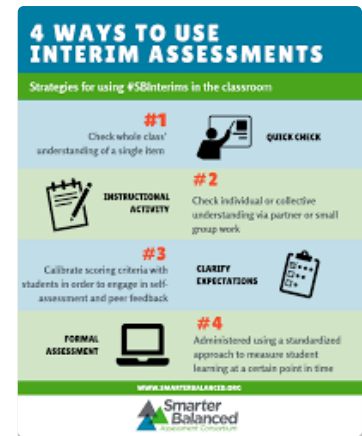
Currently, each elementary, middle school, or high school interim test is one cluster, and will take about 5 to 11 minutes to complete. Keep in mind that teachers will have to be TA certified (see article above) to provide an interim assessment.



We're Orna-Ment to Practice with Smarter Balanced Interim Assessments

As we are entering 2022, you recognize that the statewide assessment window is approaching (mid-March through May).

The State Department has powerful interim and formative assessments loaded on the [Idaho Portal](#). A full list of interims available in [English Language Arts/Literacy](#), [Mathematics](#), and [Science \(elementary/ middle school/ high school\)](#) will help guide teachers on what to choose to help students prepare for the depth of knowledge and student inputs/navigation that they'll experience on those assessments.



The interim assessment window closes February 25th right before the ISAT window opens.

Raise the Brr...How Much Should My Student Grow on ISAT?

How much should students grow on their ISATs? It's a common question this time of year and has a complex answer. In order to better understand, take a look at the examples below:

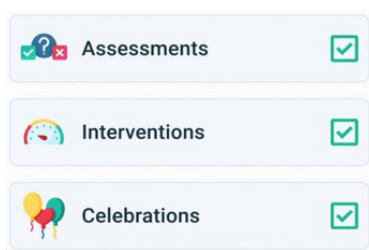
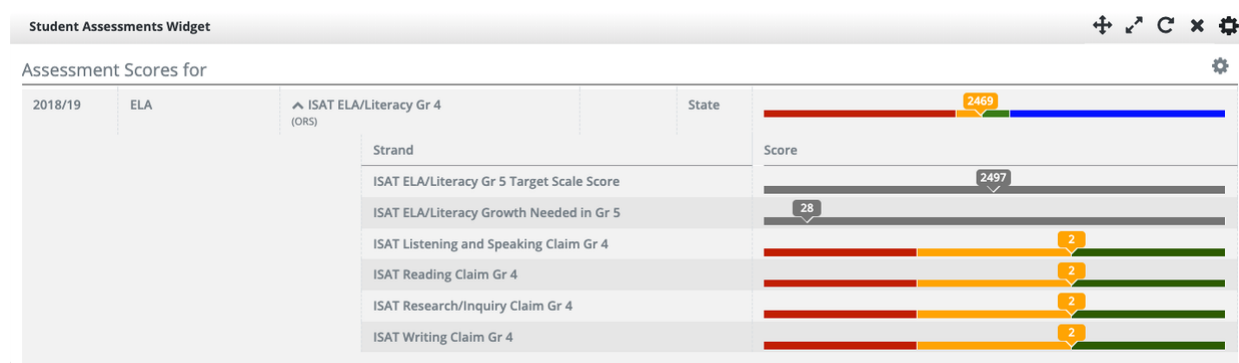
- **Scenario 1 - the student WAS at level 3 (proficient) or higher in the 2020-2021 school year in either ELA/Literacy or mathematics**

In this event, refer to the expected benchmarks for ELA Literacy and Mathematics for the current school year located on [MyCDASchools > Assessments > Smarter-Balanced > Results](#)

- **Scenario 2 - the student's score WAS NOT at level 3 or 4 on either subject in the 2020-2021 school year:**

Your building's ability to meet state goals (adequate yearly performance) is based on both proficiency and growth. Ultimately, these students were placed on a three-year trajectory to being proficient on those assessments in future grades.

All [instructional staff can see the goals and run reports from](#) Homeroom. Although I should have said so in the video as well, you can always click the “gear” at the top of each widget to print or export your data. If you or your building leadership teams need assistance, I’ll also be glad to help guide you.



An IStation Login and Website Redesign?...Glove it!

Over the coming months, Istation will be introducing a brand new educator experience on their website - www.istation.com. The multiphase project will launch this month with a new login experience followed by a new home page in spring 2022. The [first noticeable difference will be at the home page but all of the links that you may have bookmarked](#) will remain the same.

Also, please be aware that IStation is re-norming scoring for August, 2022. Part of this process will include studying new items that haven't yet appeared in the current banks. Specifically, students in prekindergarten, 1st, 3rd, and 4th grades will receive an extra subtest at the end of their ISIP Reading assessment in the February assessment.

- Extending growth monitoring testing time by approximately 5-10 minutes;
- ISIP score will NOT be affected by this additional subtest



The Ski's the Limit: Students' Self-Identified Personality Types

Students and staff in grades 06-12 have access to [Xello](#), unlocking a host of lessons, activities, and opportunities around college and career preparedness. As part of that work, students research potential careers, post-secondary opportunities, and can fill out college applications.

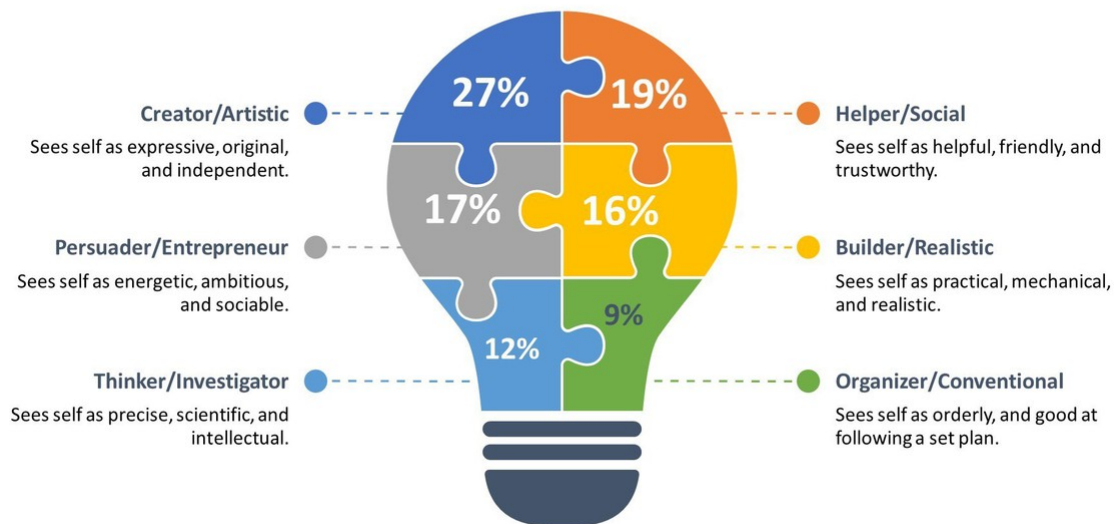
One of those early experiences is to explore potential careers using a matchmaker tool. As part of this process, students self-identify a personality type that they feel best matches their current mindset and

then Xello helps to identify potential thriving, promising, challenging, and academic work environments and the post-secondary work that best prepares them.

Based on December, 2021 data currently in Xello, here's a distribution of our students' personality types:

xello Identified Personality Types (Grades 06-12)

Based on Holland's 6 Personality Types



Freeze Frame: Send Pictures for Board Presentations

Each month, we present information to the Board on a variety of topics related to assessment and system performance - this last month discussing [program enrollment](#), [PSAT](#), and [graduation rates](#). If you have an image of student work or teacher guidance that supports the practices of assessment as a part of the teaching and learning process, we'd like to highlight within future presentations! Of course, we'll always ensure that student confidentiality is maintained and that parents/guardians are informed as well as those in the image.



Preferred images will be in landscape format and sent as an attachment to testing@cdaschools.org



Spruce Up Student Accommodations

Speaking of ISATs, it's imperative that students needing testing accommodations have time to practice using the portal and extend the supports they have in the classroom to their tests.

Please work with office staff to ensure that all **expected student accommodations are added to Skyward by the end of January**. These will be uploaded to the Idaho Portal soon after so that students can navigate and practice before the summative window opens in mid-March.


For assistance, check out this [hopefully informative video](#).



Contact Us


 @cdaguyinbowtie

Our team is very willing to support you at any time. Reach out as you may need support.

 1400 North Northwood Center ...

 msnelson@cdascschools.org

 10006

 my.cdascschools.org

